

NOTES:

Stepoc 200 will accommodate a single layer of reinforcement only and is laid in half bond. The first course is mortar bedded to ensure it is completely level.

Please ensure all calculations are carried out using the correct values for the position of the reinforcement and in accordance with the relevant design standard.

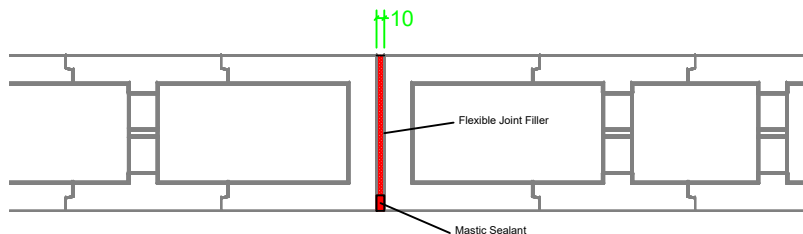
Corner and End Details should be constructed first and any cut blocks incorporated towards the center of the walling section.


Movement joints should be incorporated at maximum 20m centers using the End Detail to finish and start the wall. Final decision should lie with the Structural Engineer

Reinforcement shown at minimum possible centers. Final design may allow for increased centers however these must still be multiples of 200mm.

Concrete should be to Structural Engineers specification but no less than a C32/40 specification with a slump of no less than 150mm (S4) and a maximum aggregate size of 10mm. Cover to vertical reinforcement should always be minimum 40mm.

Concrete infill - 0.12m³/m²



Project 200mm Stepoc - Standard Details		
Title Movement Joint Detail		
Part Number ST-200-MJ		Rev C
Drawn By TJF	Date 21.05.2019	Scale NTS
Approved By	Date	Units 1 & 2, Cosgrove Business Park Soot Hill, Anderton Northwich Cheshire CW9 6AA Tel: 0333 234 3434 www.andertonconcrete.co.uk Anderton Concrete Ltd. 2019 ©
Drawing is supplied by Anderton Concrete Ltd and must not be reproduced or shown to others without prior written consent.		