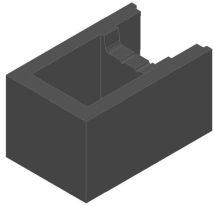
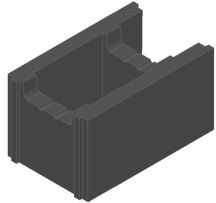


V3



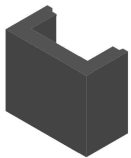
Subject to Engineer's design a site cut notch may be required in V6 unit to allow for continuation of reinforcement through lintel

V2

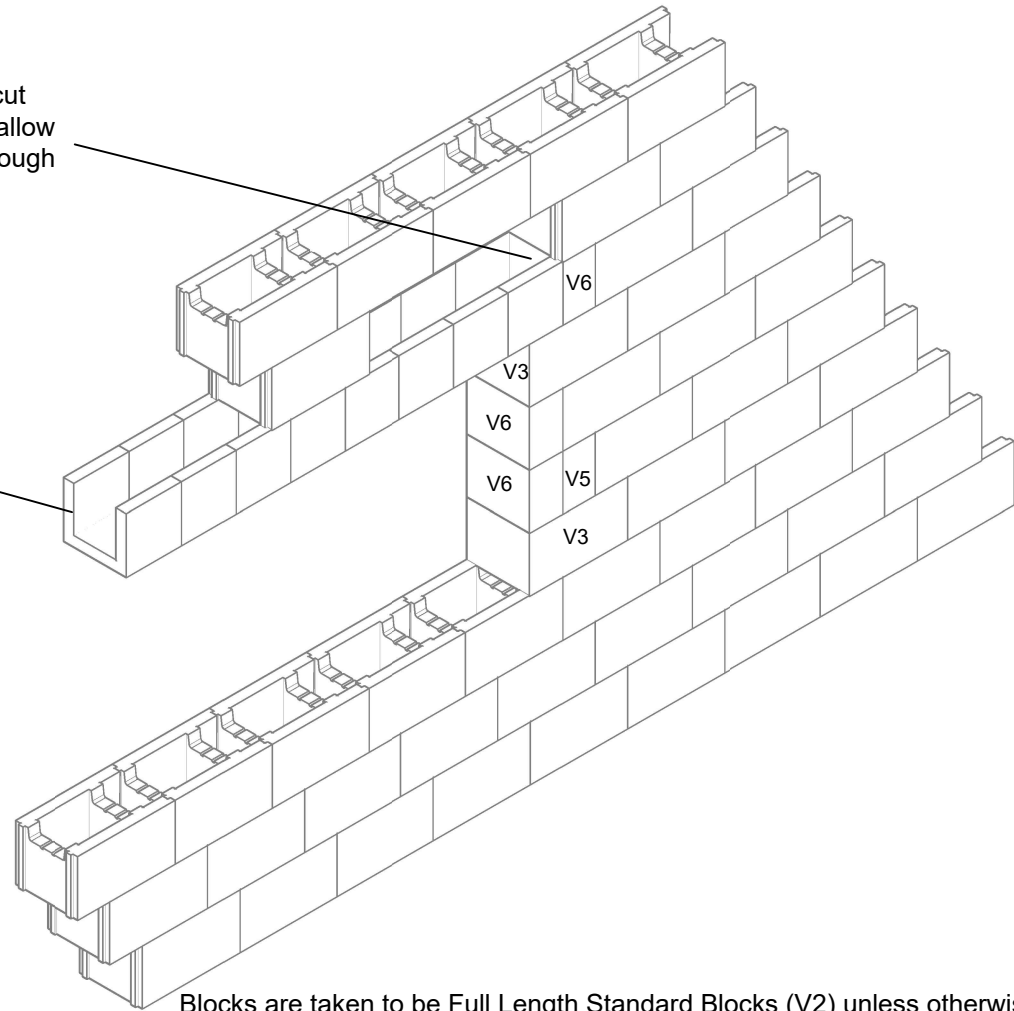
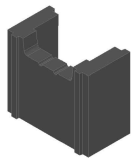


Lintel formed using V3 units cut to 225mm long and laid on end to form trough. Temporary support will be required during construction. Structural Engineer to design lintel subject to loadings

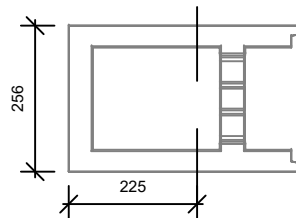
V6




V5



Blocks are taken to be Full Length Standard Blocks (V2) unless otherwise marked



V3 cut to 225mm length

| | | |
|---|--------------------|---|
| Project 256mm Stepoc - Standard Details | |  |
| Title OPENING & LINTEL DETAIL | | |
| Drawing Number ST - 256 - OPEN | | Rev |
| Drawn By TJF | Date 21.05.2019 | Scale NTS |
| Approved By | | Date |
| Drawing is supplied by Anderton Concrete Ltd and must not be reproduced or shown to others without prior written consent. | | |

Units 1 & 2, Cosgrove Business Park
Soot Hill, Anderton
Northwich
Cheshire
CW9 6AA
Tel: 0333 234 3434
www.andertonconcrete.co.uk

Anderton Concrete Ltd. 2019 ©